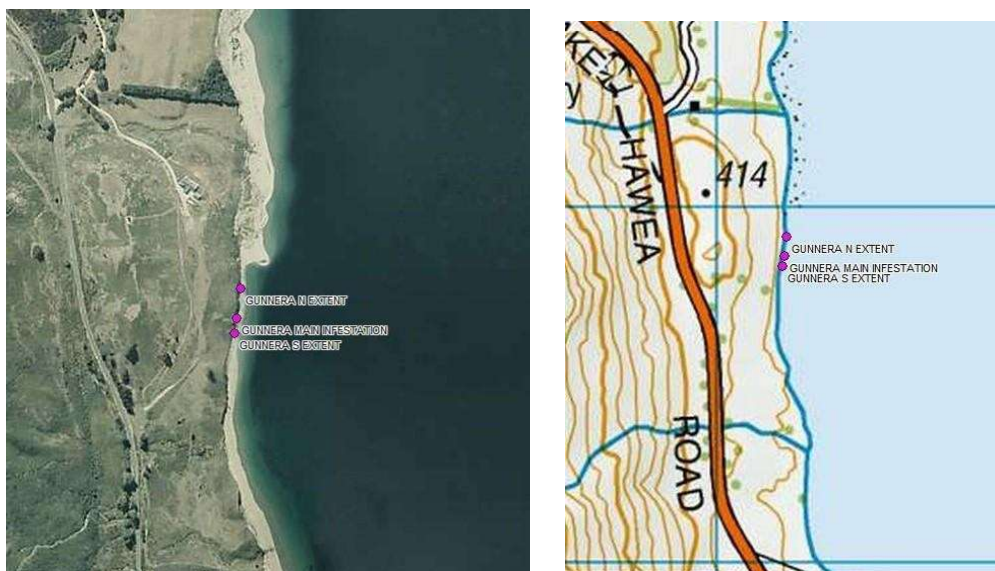


Gunnera outbreak, Lake Hawea

Weed species: *Gunnera tinctoria*; Chilean Rhubarb

Location: west shore of Lake Hawea, 200m south of Glen Dene Homestead. The currently known extent of the infestation is on LINZ land, within easements for Contact lake operations. **GPS coordinates:** centred on NZTM 1302182 5056869



Site description: on cliffs and talus slopes behind a gravel to boulder beach. The cliff top has not yet been examined. Other weed species present include crack willow, blackberry, and briar. Native species include tutu and bracken. The site is accessible by boat. There is vehicle access to within 200m from the north, via Glen Dene Station.



Gunnera location from offshore. S = southern limit (known); M = main infestation; N = northern known limit; H = homestead.

Status: *Gunnera* is an unwanted organism under the Biosecurity Act 1997. It is on the National Pest Plant Accord List (MAF Biosecurity Authority 2001). **Selling, propagating or distributing it is illegal throughout New Zealand.** It has the potential to spread dramatically in the local Hawea environment, and is a major threat to waterways in England and Ireland, among other places.

Taranaki has the greatest density of wild Chilean rhubarb in New Zealand, with approximately 40 kilometres of coastline badly infested. DOC are undertaking removal projects where *Gunnera* is present on conservation land, especially on the West Coast. The West Coast Regional Council includes *Gunnera* in its Proposed Pest Plant Management Plan 2016 as a general progressive containment pest, requiring landowners to control *Gunnera* on their own property.

Under the Otago Regional Council Regional Pest Management Plan, there are no rules for landowners in Otago regarding *Gunnera*. *Gunnera* is only classified as a pest in some areas around Otago Harbour, where the goal is to progressively contain it.

Control:

- Remove flower spikes and dispose at landfill.
- Pull out individual plants and seedlings. Ensure removal of all rhizome (an underground fleshy stem) fragments and seed/flower heads and dispose at landfill.
- Cut and paste the stump near the ground using a suitable herbicide gel containing either Picloram or Glyphosate.
- Foliage spray when the plant is actively growing using 100ml glyphosate + 2ml penetrant/10L.

Further reading:

[Gunning for Gunnera | New Zealand Geographic \(nzgeo.com\)](http://nzgeo.com)

[Goodbye Gunnera, be gone old friend | Conservation blog Conservation blog \(doc.govt.nz\)](http://doc.govt.nz)

[Chilean rhubarb • Weedbusters](#)



Fully-grown plant (left) and seedlings (right)



Central bud (pink) and cut stem (left); seed heads from one mature plant (right)